

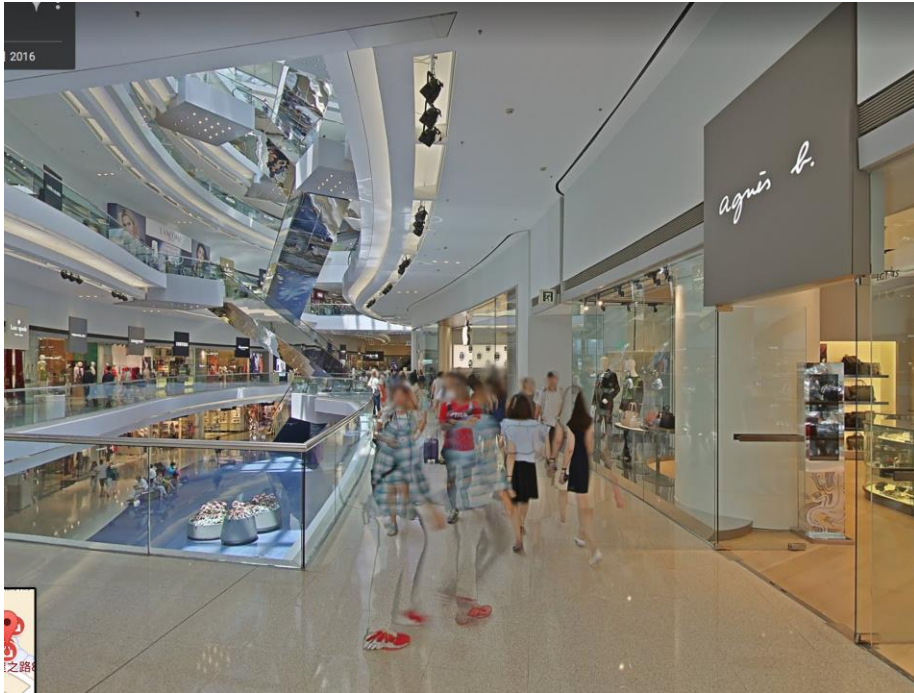


1. Quickly after passing turnstiles at the **exit G2** of MTR station. You will find a footbridge leading to the shopping mall: **Festival Walk**. Enter it.

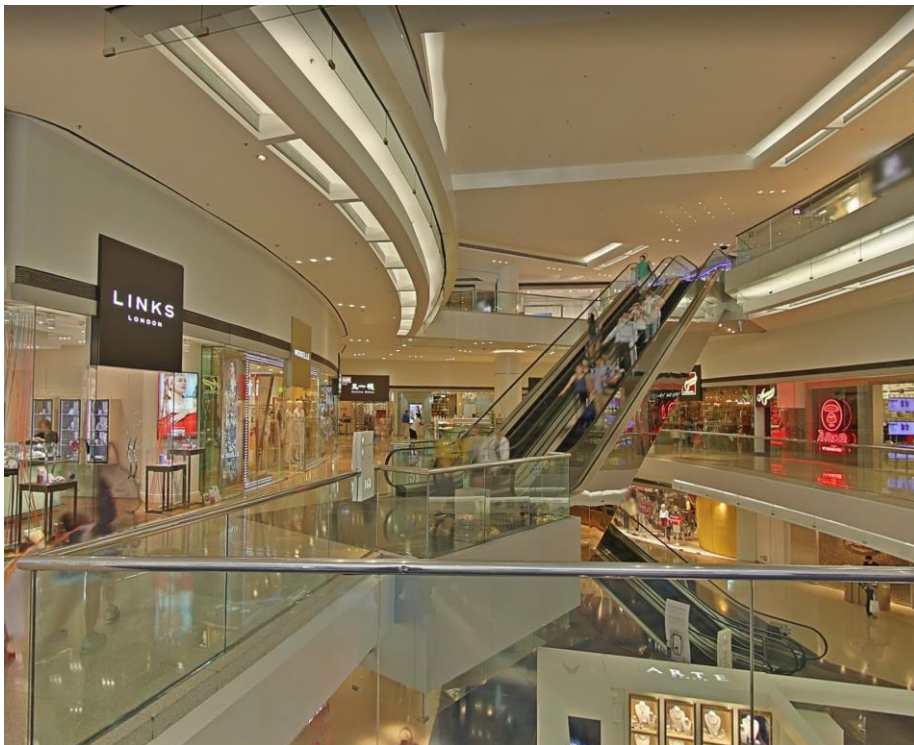




2. You will see the shop **agnès b.** (LG1/F) Turn right and you will see the **Apple Store**.



3. Walk beside the **Apple Store**.



4. You will see an escalator beside **LINKS London**. (LG1/F) Take it to one higher floor.



5. Take another escalator beside the restaurant **Jasmine**. (G/F) And take the glass door exit leaving the mall.



6. You will see the only high-rise building which is our venue: LAU. Take the zebra-crossing to go another side of the road.



7. Walk up the stairs and there is a lift lobby beside the restaurant **Délicrance**. Choose the low zone lift to 7/F.



8. Push the glass door and find another end of the Bistro. Cross the sky bridge to the low block until the first executive classroom on your right as shown below.



[Alternatively, in case of blockage on 7/F (though the Bistro is promised to open on 11th June), you could go to low block via 6/F instead and access the open staircase to 7/F as shown below.]

